

GRIDLOK®

SEISMIC CEILING BRACING – LET'S MAKE IT SIMPLE



1/ Place GRIDLOK® in position specified on ceiling grid main runner or top cross rail and fix with #10-gauge wafer tek screws.



2/ Measure distance to structure from ceiling grid.



3/ Cut your vertical steel stud to length. Will need to repeat for the two 45° steel studs as per plenum chart provided.



4/ Attach vertical top connector to cut stud.



5/ Attach 45° top connector to cut stud.



6/ Connect vertical arm to GRIDLOK® unit and rotate to avoid service clashes.



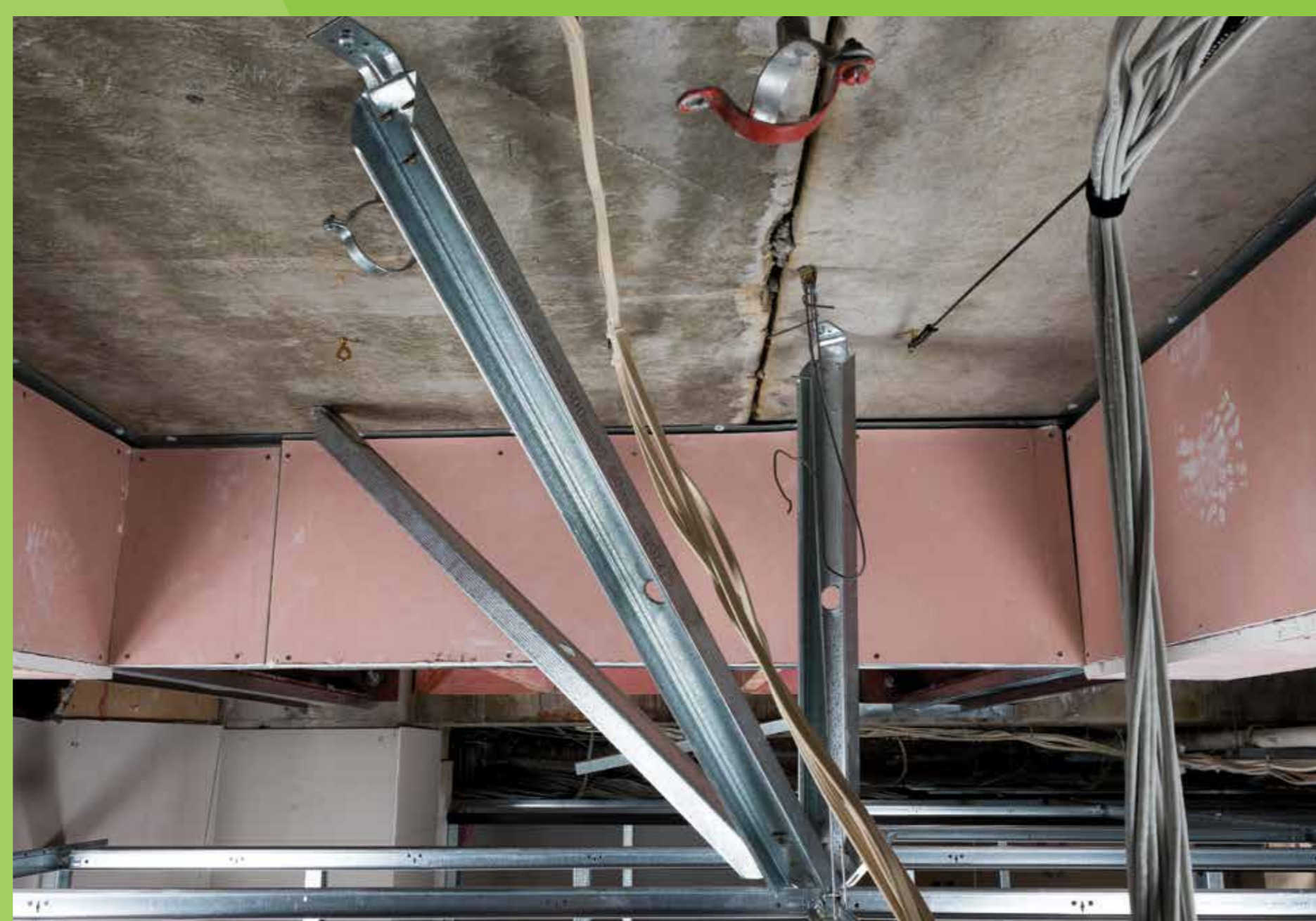
7/ Connect stud to 45° top connectors and 45° GRIDLOK® arms.



8/ Drill clearance holes into structure over.



9/ Fix GRIDLOK® top connectors to structure over with approved anchors.



10/ GRIDLOK® install complete.

TRACKLOK® are here to help, send your ceiling plans to our design team at designs@tracklok.com for assistance with GRIDLOK® placements.

www.tracklok.com

